

# VSP Supplemental Vision Plan

Administered by Vision Service Plan



Covered Services	In- Network	Out-Of-Network
Exam	\$10 copay \$60 Copay (Contact Lenses)	Not Covered
Frames	Up to \$130 (Retail Frames) Up to \$150 (Featured Frame)	Up to \$71
<b>Standard Plastic Lenses</b>		
Single/Bifocal/Trifocal/Lenticular Lenses	Covered at 100% after \$25 copay	\$32 up to \$80
<b>Contact Lenses (in lieu of Glasses)</b>		
Conventional	Up to \$130	\$105 up to \$210
Medically Necessary	Covered at 100%	\$105 up to \$210
<b>Frequency</b>		
Examination		12 Months
Lenses and Contacts		12 Months
Frames		24 Months

\*Employees enrolling into the Medical Plan will have the benefit of an eye exam at a \$10 copay. If you would like additional vision coverage, you and your family can enroll in the VSP Buy Up plan shown above.

## Monthly Costs

Coverage Tier	VSP Standard Plan
Retiree	\$4.60
Retiree+ Spouse	\$9.20
Retiree + Child	\$9.20
Employee + 2 Children	\$9.30
Employee + Family	\$14.82

*\*Enrollment tiers are no longer tied to the medical enrollments tiers.*

## Finding a Participating Vision Provider

Create an account at **vsp.com** and review your personalized benefit information.

You can find a VSP in-network doctor by visiting **vsp.com** or calling **800.877.7195**.

- **Click “Find a Doctor”**
- **Search by Location, by Office or By Provider Name**
- At your appointment, simply tell them you have VSP.  
No ID card needed

# Your VSP Plan Highlights

	VSP Plan Highlights
Essential Medical Eye Care	<ul style="list-style-type: none"><li>• Retinal imaging for members with diabetes covered-in-full</li><li>• Additional exams and services beyond routine care to treat immediate issues from pink eye to sudden changes in vision or to monitor ongoing conditions such as dry eye, diabetic eye disease, glaucoma, and more</li><li>• Coordination with your medical coverage may apply. Ask your VSP network doctor for details</li></ul>
Frame Allowance	<ul style="list-style-type: none"><li>• <b>\$130</b> Frame allowance (or \$150 Featured Frame allowance) every <b>24</b> months or</li><li>• <b>LightCare</b> benefit for non-prescription coverage <b>\$130</b> frame allowance</li></ul>
Lenses (every calendar year)	<ul style="list-style-type: none"><li>• Single vision, lined bifocal, or lined trifocal lenses for adults <b>\$25</b> Copay included in glasses</li><li>• Impact-resistant lenses for dependent children</li></ul>
Lens Enhancements	<ul style="list-style-type: none"><li>• Standard Progressive lenses covered in full</li><li>• <b>20-25%</b> savings on lens enhancements like Scratch-resistant coating, UV protection, Anti-glare coatings</li></ul>
Contact Lens Allowance (instead of glasses)	<ul style="list-style-type: none"><li>• <b>\$130</b> allowance for contacts lenses and copay up to <b>\$60</b> for contacts lens exam (fitting and evaluation)</li></ul>
Retinal Imaging	<ul style="list-style-type: none"><li>• No more than a <b>\$39</b> copay on routine retinal imaging as an enhancement to a WellVision Exam</li></ul>

# VSP LightCare™

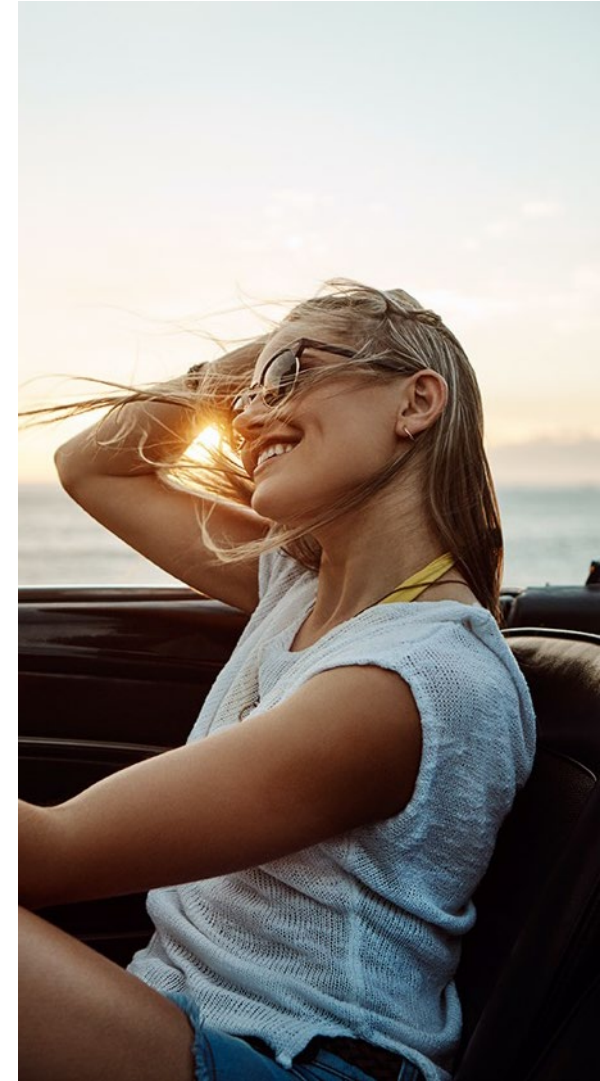
Digital screens and fluorescent lighting emit blue light that can contribute to headaches, blurred vision, and sore eyes. Wearing blue light filtering glasses indoors can reduce exposure to blue light and glare.

## Keep Your Eyes Protected

Visit a VSP network doctor and choose either prescription eyewear coverage, or use your frame and lens allowance toward ready-to-wear:

- non-prescription sunglasses, or
- non-prescription blue light filtering glasses

Register and log in to [vsp.com](https://www.vsp.com) to review your benefit information. Based on applicable laws; benefits may vary by location



# Participating Retail Chains

There are more than 10,000 retail chain locations in the VSP network in addition to Visionworks, including:

- Costco Optical
- Walmart Vision Center
- Sam's Club
- Pearle Vision
- MyEyeDr
- And more



# Eyeconic

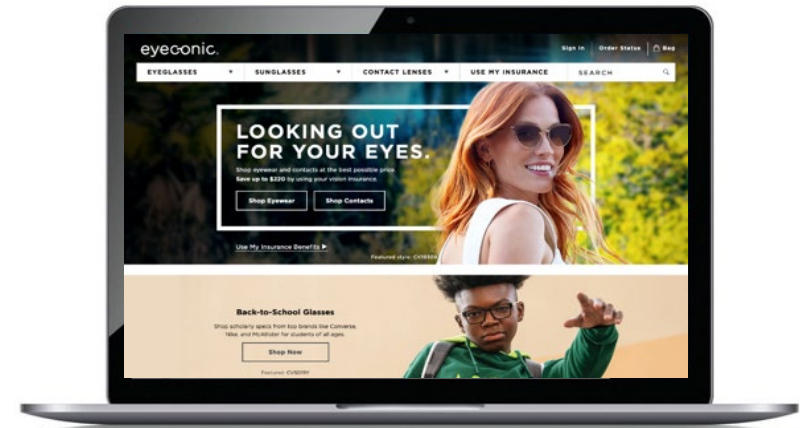
As a VSP-owned company, **Eyeconic** seamlessly connects your VSP vision benefits to your account.

Eyeconic offers a variety of well-known brands and contact lenses. Choose from more than 70 eyewear brands like Calvin Klein, Cole Haan, Nike, and more.

Find your product, customize your order and we do the rest. Start saving today at **eyeconic.com**® today.

Create an account at eyeconic.com and link your VSP vision plan. Use your vision insurance on Eyeconic to get exclusive savings and perks. It's certainly not required, but here's what you'll get:

- An easier, streamlined shopping experience
- The ability to save and share your favorite looks
- 20% off any additional eyewear purchases if you've already used your benefits.



**eyeconic**  
a vsp vision company