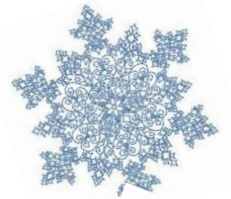




# MAKING HOLIDAYS BRIGHT



*Here are a few suggestions to help others during the holiday season.  
Together, we can make everyone's holiday bright!*

## Thanksgiving

### Community Dinner "Pick Up" available to the public:

**First Baptist Church**, 800 Thompson St., Ashland, VA 23005, Noon to 2:30pm on **November 26th**. Call to complete your order and choose designated pick-up time by November 24th. Call Hellen or Price at (804) 798-8988. Para español (804) 337-7372.

### The Giving Heart Community Thanksgiving Feast

Greater Richmond Convention Center, 11am to 2:00pm on **November 26th**. Go to website to complete your order and use curbside pickup. Volunteer applications are now available. Visit [www.thegivingheart.org](http://www.thegivingheart.org) for more volunteer and donation opportunities. Contact (804) 749-4726 for more information.

## Christmas Mother Requests

Submit pre-mailed application by **October 31st**. Hanover families seeking assistance may submit a letter of request for children 18 & under or senior citizen to: Hanover Christmas Mother, P.O. Box 39, Doswell, VA 23047. The scheduled distribution date is **December 12th**. Pre-recorded information is available at (804)365-6646.

## You Can Give the Gift of Recognition & Appreciation...

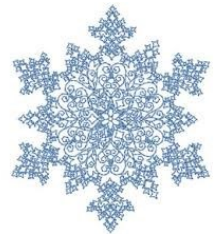
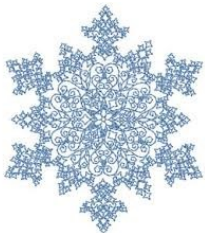
### Hanover Spirit of Volunteerism Awards

Nominations open **January 1st**.

Nomination details will be posted on 1/1/21

*Honor outstanding individuals, groups,  
businesses, families and others  
who are making a difference every day!*

[www.HanoverVolunteers.org](http://www.HanoverVolunteers.org)



Call Hanover County Community Resources 804-365-4300 or  
Visit [www.HanoverVolunteers.org](http://www.HanoverVolunteers.org)  
to discover even more ways to share your time during this holiday season  
and throughout the year.  
<https://www.facebook.com/HanoverCommunityResources>



## You Can Make A Monetary Donation...

*Any local agency would benefit from monetary donations. Consider making a financial donation for sponsorship of services, camp scholarships, or honoring a program worker or loved one at any agency of your choice.*

*The agencies below are included because they provide financial assistance for emergency needs or sponsorship for Christmas Mother.*

### **Hanover Christmas Mother Program:**

P.O. Box 39, Doswell, VA 23047

(also accepts gift cards)

### **ACES (Ashland Christian Emergency Services):**

<https://aceshanover.org/>

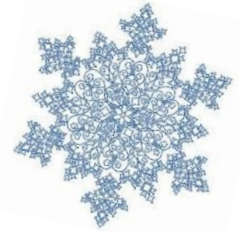
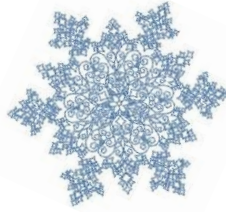
P.O. Box 114, Ashland, VA 23005

### **MCEF (Mechanicsville Churches Emergency**

**Functions):** P.O. Box 604, Mechanicsville, VA 23111

### **WHEAT (Western Hanover Emergency**

**Action Team):** P.O. Box 171, Beaverdam, VA 23015



## You Can Share Your Time...

### **Hanover Adult Center:**

Volunteer to sing, play musical instruments, lead an activity, craft or game; assist with special office or “handyman” projects.

Contact: (804) 746-0743. For more information go to [www.hanoveradultcenter.com](http://www.hanoveradultcenter.com).

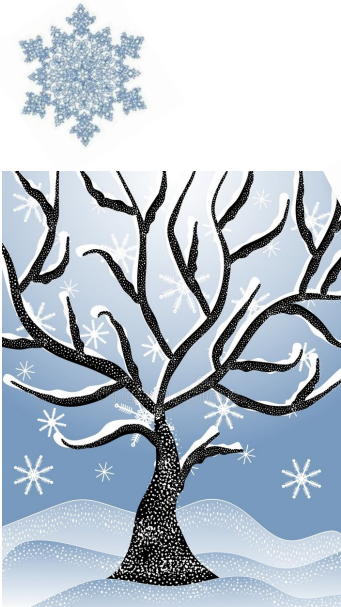
### **The Giving Heart:**

Volunteer for Richmond area’s Community Thanksgiving Feast, Monday through Thursday. More volunteer opportunities available throughout the week of Thanksgiving.

Contact (804) 749-4726 for more information.

### **Hanover Community Service Board (CSB):**

Volunteer as an individual or group to coordinate gifts for individuals with developmental/intellectual disabilities who may not otherwise receive gifts this holiday season. Contact Michele Elliott at (804) 365-6606. For more information go to <https://www.hanovercounty.gov/358/Community-Services-Board>.



# You Can Collect or Contribute Items...



## **ACES (Ashland Christian Emergency Services):**

ACES accepts donations in the form of household items, non-perishable foods, and clothing. Contact (804) 798-2784 or go to <https://www.aceshanover.org/> for more information.

## **Hanover Adult Center:**

Donate gift cards, party supplies, game prizes, activity books & supplies, exercise items, hand sanitizer, laundry or kitchen supplies. Contact: (804) 746-0743 or go to <https://www.hanoveradultcenter.com> for more information.

## **Hanover Community Service Board (CSB):**

Donate gift cards to Wal-Mart, Target, grocery stores, restaurants, gas stations, etc., as well as donations of winter clothing, toiletries, meals and non perishable foods for the agency's food pantry. Contact Michele Elliott at (804) 365-6606 or [mmelliott@hanovercounty.gov](mailto:mmelliott@hanovercounty.gov). For more information go to <https://www.hanovercounty.gov/358/Community-Services-Board>

## **Hanover County Animal Control:**

Donate pet items including food, newspapers, blankets, towels, grooming supplies, collars, carrying crates, kitten/puppy formula, toys, etc. Contact Animal Control at (804) 365-6485 or visit <https://www.hanovercounty.gov/172/Animal-Control> for more information.

## **Hanover Christian Firewood Ministry:**

Donate food, clothes, coats, shoes, gift cards, etc. to be used in the Christmas Box Program. Contact Patricia Drudge at (804) 370-8167 and find them on Facebook.

## **MCEF (Mechanicsville Churches Emergency Functions):**

Donate NEW underwear and socks for men, women and children – all sizes. For up-to-date needs, check website at [www.4mcef.com](http://www.4mcef.com).

## **Moments Of Hope:**

Donate nonperishable foods, fresh produce, toiletries, dry goods, and canned goods. Contact (804) 913-9151. For more information go to: <https://momentsofhopeoutreach.org>.

## **Noah's Children:**

Donate items from a specific wish list. Donate gift cards to grocery stores, department stores, or restaurants inside of hospitals like Chick-fil-a, Starbucks, and Panera. These items can be dropped off at their office which is located at 5855 Bremo Road-Suite 409, Richmond, VA 23226. Contact Tasha King at (804) 287-7686. For more information go to <https://www.noahschildren.org>.

## **OAR of Richmond:**

Donate gift wrapping supplies (i.e. rolls of wrapping paper, tape, bows, ect.), new or gently used adult winter clothing, grocery store gift cards, or Christmas gifts for children of incarcerated parents. Contact Alexis Slipow at (804) 643-2746 [jslipow@oarric.org](mailto:jslipow@oarric.org) For more information go to [www.oarric.org](http://www.oarric.org).

## **Pappy's Pantry:**

Donate nonperishable foods, baby formula, laundry detergent, deodorant, shampoo, soap, hand sanitizer, tooth paste, tooth brushes, etc. Contact Joey or Andrea Fields at (804) 387-4226 or [andrea@pappyspantry.org](mailto:andrea@pappyspantry.org) . For more information go to <https://www.facebook.com/pappyspantryministries/>.

## **Senior Connections:**

Donate non perishable food items, gift cards to local grocery stores , such as VISA/Food Lion/ Walmart and Kroger's. Please have all items donated by December 17<sup>th</sup>, 2020. Contact Diane Foster at (804) 343-3009 or [dfoster@youraaa.org](mailto:dfoster@youraaa.org). For more information go to <https://seniorconnections-va.org/>.

## **St. Joseph's Villa:**

Provide gifts for children and families by using the Amazon Wish List on our website or donate grocery store gift cards. Contact Kathy Perun at (804) 521-5577 or email her at [kperun@sjvmail.net](mailto:kperun@sjvmail.net). Please see <https://www.neverstopbelieving.org/donate-goods/season-of-hope/> for additional information. Contact Kathy Perun at (804) 521-5577 or [kperun@sjvmail.net](mailto:kperun@sjvmail.net)

## **VCU Health:**

Collect magazines, puzzle books, or comfort items. See full list of Virtual Volunteer projects at [www.vcuhealth.org/volunteers](http://www.vcuhealth.org/volunteers). Contact Volunteer Services at (804) 828-0922 or [volunteer@vcuhealth.org](mailto:volunteer@vcuhealth.org).

## **WHEAT:**

Donate from a specific list of foods or offer a complete meal to Western Hanover families in need. One meal costs \$35. You can mail a check to: W.H.E.A.T. PO Box 171 Beaverdam, VA 23015 and write "Holiday Dinner" in the memo portion. Contact Cathy Williams at (804) 752-2339. For more information on donated items needed visit [www.wheathelp.org](http://www.wheathelp.org).

**Donations are due no later than December 1, 2020.**



